

DEANS SD  
5 JAD ALBAUGH 523-455 40x114

#10-A A MARONA 279-197 0.07A<sup>c</sup>  
#15 " " " " 0.07A<sup>c</sup>  
#33-A DIF PERINCL 506-790 0.097A<sup>c</sup>  
#32-B " " " " 0.103A<sup>c</sup>

LAND  
#14 J.M. CONNOR ET AL 478-277  
#19-A L. BUFFONE 135-195 0.11A<sup>c</sup>

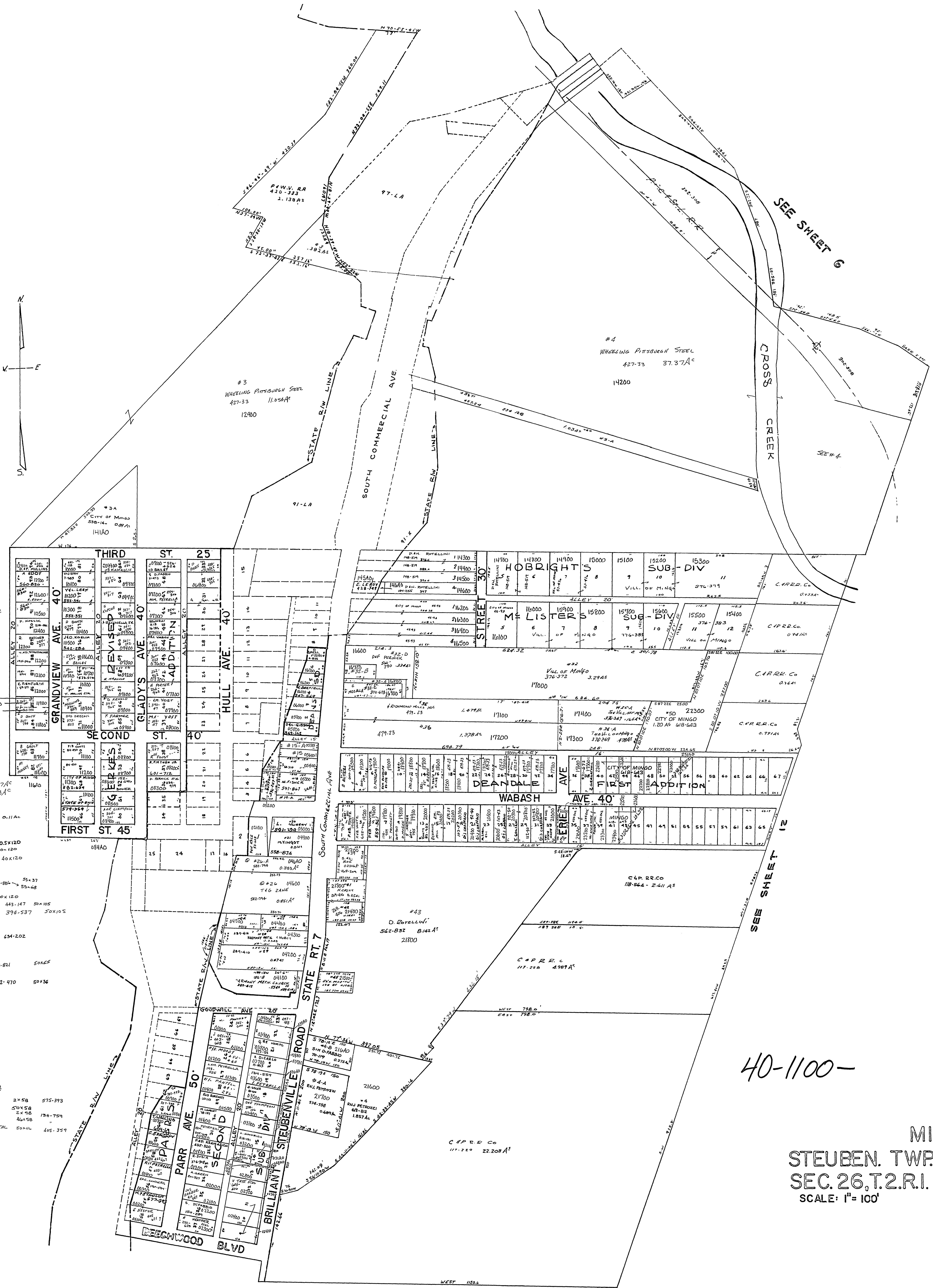
DERNE SUB-DIV.  
6 A. CHAPPANO 150-901 40.5x120  
3 K. FORD & S. GUYAS 570-332 40x120  
7 F. PERINCK 452-110 40x120

GERKES  
LOT 50 (W/IMP) R. MALESICK 55x37  
LOT 50 (LEAD) R. VASICH 433-884 55x48  
#58 ELD LANDY 566-684 50x120  
(GERKES SD) LOT 51 W. RUCKMAN 483-147 50x105  
53 R. VASICH 394-537 50x105

DEANDALE  
LOT #35 TRI-STATE WASTE PAPER 634-202

GERKES  
LOT #34 KIT MULLINS 118-821 50x62  
EPT #85 GREENFORTH 582-470 50x36

PARR'S 2<sup>ND</sup> SD  
#13 J.S. ANDRIANO 2x58 575-393  
#14 R. HANOVER 50x58  
#15 R. HANOVER 2x58 134-754  
#16 E. POTENZIANI ET AL 50x114 405-359



SEE SHEET 6

SEE SHEET 12

40-1100-

MINGO  
STEBEN. TWP.  
SEC. 26, T. 2, R. 1.  
SCALE: 1" = 100'